



Guale News

OCTOBER/NOVEMBER 1992

VOLUME 12, NO. 5

October Meeting: Tuesday 13th, Guale Room, St. Marys Library. 7:00. Executive Session 6:30.

WHERE IS IT?

Can you pinpoint Mabel? What about Jerusalem? Or Raines Landing? Do you perchance know where "the other" Kings Bay is? A hint - they are all in Camden County!

If you want to know more about these and other settlements and former settlements in Camden County, Dr. John Christian, Guale Historical Society president and librarian of Bryan-Lang Historical Library has been researching the dead towns of Camden scattered throughout the woods and along the rivers, and is prepared to bring these little known facts to you. You won't want to miss this exciting meeting - come and bring a guest!!

ELECTION OF OFFICERS

Election of Officers for 1993 will be held during the business session. Betsy Thomas is chairman of the Nominating committee.

Present officers are:

- President, John Christian
- Vice President and Program Chairman, Henry Williams
- Treasurer, Mildred Walko
- Recording Secretary, Dot Holstun
- Corresponding Sec. & Newsletter Editor, Eloise Bailey
- Directors 1991-1993:

- Dot Barker
- Gwen Thomas
- Marjorie Waters

NOVEMBER MEETING - A WALK THROUGH OAK GROVE CEMETERY.

Saturday, November 14th, 10:00. Meet at front gate corner Weed and Bryant. Eloise Bailey, guide.

Oak Grove dates to the founding of St. Marys in 1787 and appears on the early town maps. The earliest marked grave dates to 1801, so probably the earlier ones were either not marked or markers have been lost through the years.

A stroll through the cemetery will bring stories of the Acadians, of military figures from every war fought by the U.S., yellow fever victims, planters, timbermen, "My Friend" and "My Sister" - or Whatever happened to Lt. Madison's son? Come along for this walk through history!

By the way - will you men please bring a hammer, pliers and a screwdriver? Nothing serious, the marker board that is the responsibility of the Society needs the sheets of names and maps replaced and the plexiglass must be removed.

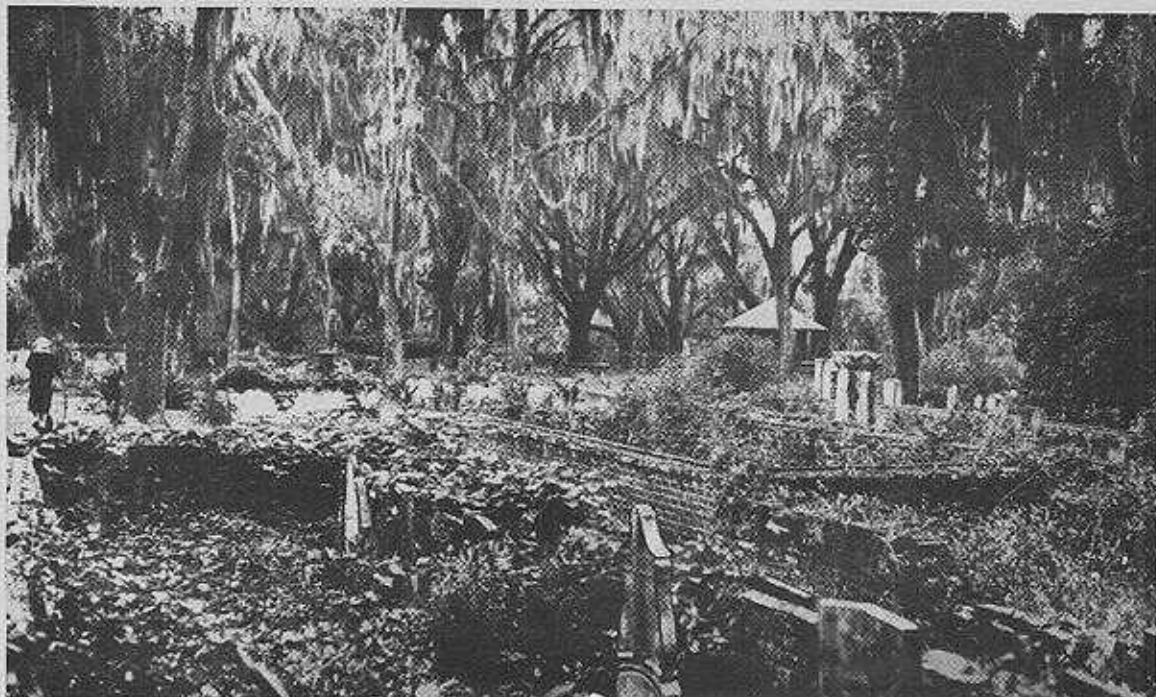
A dutch treat lunch will follow, place to be announced. On the way there will be a detour by the "pauper's" cemetery, also appearing on the original town map.

FROM BRYAN-LANG HISTORICAL LIBRARY

You must come see the latest acquisition, a gift from the Cole family! Years ago, a favorite money raising event was the raffling of a signature quilt. Each person signing made a donation, and the ladies of the organization then embroidered the names before making the quilt. This one is from the Waverly community and many families are represented.

The extension number of Bryan-Lang has been changed. Dial the courthouse exchange 576-5601, Ext. 219.

The quarterly Library Board meeting will be delayed a couple of weeks and is scheduled for November 3 (Election day) at 5:00.



Oak Grove Cemetery in the 30s or 40s.

FROM ORANGE HALL

Be sure to mark your calendar!! Sunday, December 13th. 2:00-6:00. Christmas Tour of Homes in St. Marys. To benefit Orange Hall!!

See downtown St. Marys in all its Christmas splendor! Orange Hall will be decked out, along with historic churches and homes, with several modern homes on display as well.

Orange Hall builder Horace Pratt and his family will greet the guests during Open House there - while chamber music floods the building! Pretour tickets will be \$8. \$10 the day of the tour.

A buffet Christmas dinner on the day of the tour will be prepared and served at Seagle's Restaurant by the St. Marys Junior Women's Club to benefit Hospice of Camden County.

Tickets for both tour and dinner will go on sale soon after Thanksgiving - watch the papers and reserve December 13 for a full afternoon.

GIFT TO BRUNSWICK COLLEGE

Society members voted unanimously at the September meeting to donate \$200 to the Camden Center of Brunswick College Campaign. Brunswick College has recently received a gift of \$100,000 and 25 acres of land to help in establishing a college center here in Camden County. This is a matching gift and funds are now coming in to make this center a reality. If you would like to make a personal contribution, send to the above campaign, c/o Barnett Bank, ATTN: John Minor, P.O. Box 1086, St. Marys, GA 31558.

FROM OTHER AREAS

Amelia Island Museum of History has announced their tour "Fernandina's Finest: A Christmas Tour of Homes" to be held on December 12, 5:00 to 9:00 and December 13, 2:00 to 6:00. All homes are located in Fernandina's 50 block historic district. The tour also features an art gallery on Centre Street, St. Peter's Episcopal Church and a special party at Florida's oldest tourist hotel, Florida House Inn. Tickets are \$10 per person with early reservations or \$12 at the door. Contact Bonnie Johnson at the museum 904\261-7378 for more details.

The fall meeting of the Georgia Historical Society will be held in Milledgeville October 23 and 24. The weekend will begin with a reception at the Stetson-Sanford house on Friday. Saturday's meeting will be on the Georgia college campus. For further information call Carey Shellman at 912/651-2125.

INTRODUCING

Guale Historical Society's out-of-town member P.B. Howell, a cousin to many local residents. He is a descendant of several old county families on his maternal side: Atkinson, Mizell, Lang, Paxton among them. In 1898 Felder (son of Isaac, Jr. and Caroline Atkinson Lang) left his timber business in Charlton County and moved to Florida where he entered the citrus business. His wife Martha was the daughter of Joshua Everett and Leticia Paxton Mizell.

The interesting Felder Lang family history has been published as "Miami of the Pioneers" by a Lang daughter, and a copy is in the Bryan-Lang Library.

Mr. Howell and his family are Leesburg, Florida residents, but occasionally visit the home county of his forebears.

A CHRISTIAN PUZZLE

Those of you have heard John Christian present a program know that he is famous for his brain tapping. Here is one such puzzle you might enjoy.

To solve this - circle the names of historic streets in St. Marys.

Alexander	S	E	A	G	R	O	V	E	D	O	W	C	N
Ashley	T	T	A	L	E	X	A	N	D	E	R	O	T
Bartlett	A	O	M	W	N	S	G	N	I	H	E	L	F
Bryant	B	R	Y	A	N	T	W	E	E	D	A	E	T
Cole	L	R	N	O	R	R	I	S	E	E	D	T	T
Conyers	E	S	C	O	N	Y	E	R	S	N	Y	T	O
Dillingham	A	S	H	L	E	Y	S	A	M	E	E	D	S
Finley	L	F	I	N	L	E	Y	S	F	L	O	R	B
Fleming	L	W	H	E	E	L	E	R	T	H	E	O	
Gallop	E	F	O	U	N	D	E	R	R	R	S	O	R
Norris	Y	F	P	O	L	L	A	G	H	I	E	S	N
Osborne	T	O	R	I	C	B	S	T	M	A	R	E	E
Ready	D	I	L	L	I	N	G	H	A	M	Y	S	T
Seagrove													
Stable Alley													
Weed													
Wheeler													

Member updated since last newsletter: Family - Bob Stephens; Hubert Lang, Brunswick; Burt Rhyne; Charles Trimble; Howard Davis; W.H. Buchanan.

Individual - Patricia Overholt, Jekyll; Carol Jones, Tallahassee; Mary Bullard, So. Dartmouth; Beulah King.

Reminder - Have you paid you 1992 dues? If Guale records show that you have not, a red star is on your mailing label. Send to Mildred Walko, 800 Margaret St., St. Marys, GA 31558. Student \$2. Individual \$8. Family \$15.

Remember - save this newsletter as a reminder of coming events. This is a joint October/November issue.