



# Guale News

September 1992

Volume 12, No. 4

## BURT RHYNE TO SPEAK AT SEPTEMBER MEETING

Tuesday, September 22 7:00  
Guale Room, St. Marys City Library  
Executive Session 6:30

## LIVEOAKING ON CUMBERLAND ISLAND

Burt has learned the liveoaking techniques of New England shipbuilders, who found the liveoaks of Camden County essential to their trade and will be explaining this society members at the upcoming meeting.

Those of you who have been fortunate enough to hear Burt, who is the National Park Service archivist on Cumberland, in other programs will be marking your calendar for this outstanding presentation.

Today a viewer thinks only of a liveoak being a tree of beauty and a plus for home landscaping (or a nuisance at leaf raking time), but its twisted limbs and sturdy wood was sought worldwide by shipbuilders. No mere ax wielder cut liveoak, for this was highly skilled profession - so be on hand to learn the whys and hows of cutting our Georgia State Tree.

Remember - Burt Rhyme on the 22nd!!!

Welcome back to the fall session in Guale World - summer activities were slim, one great Sunday afternoon was spent with Virginia Steele Wood, author of LIVEOAKING, and those of you who were unable to hear her missed a grand program.

Events planned for the remainder of the year include one other sit-down program - a field trip - election for officers for 1993 and maybe an extra-participation in the Fernandina Christmas Tour of Homes and Historic places. Watch your mail.

## BRYAN-LANG HISTORICAL LIBRARY

The long awaited 1920 Camden County census microfilm has arrived! The personal information such as names, ages, occupations, places of birth have been locked up for 72 years as required by law is now available to family searchers. To assure that the microfilm reader is free when you plan to visit, call Dr. Christian at 576-5601, ext. 243 for an appointment.

## INTRODUCING

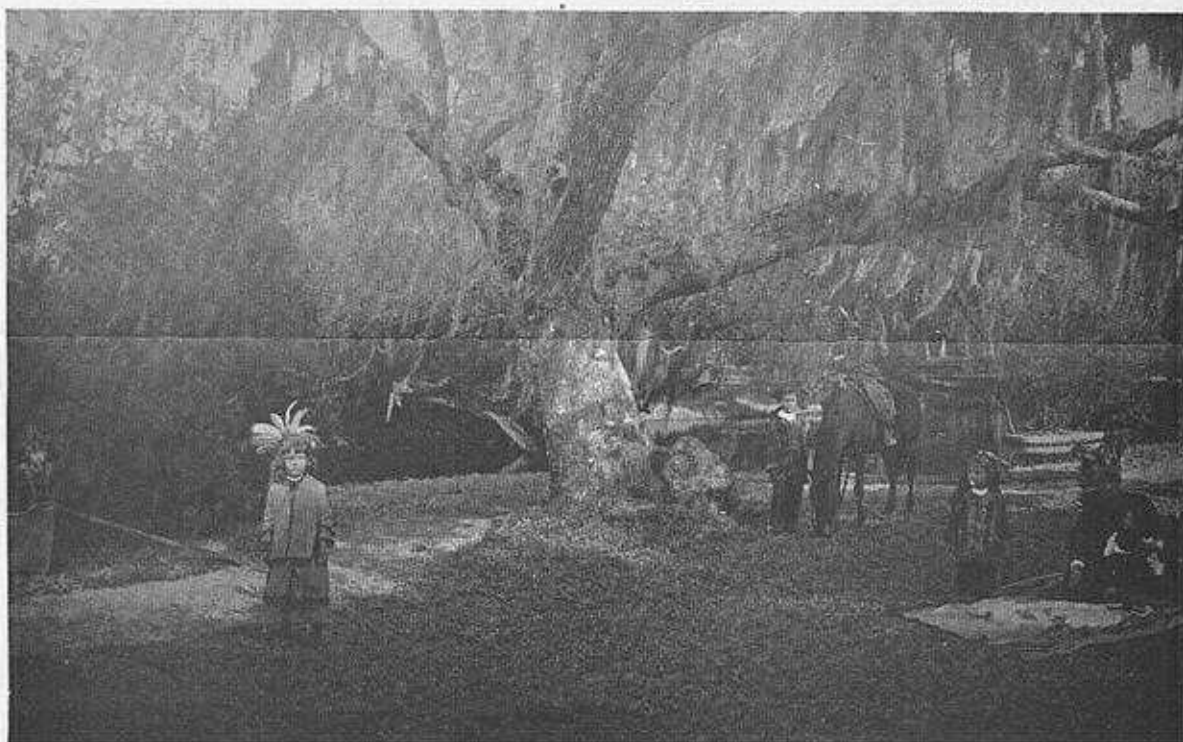
Guale Historical Society out-of-town member Lessie Davison of Greenwich, Connecticut, a Lang/Atkinson descendent. Lessie made her Camden County connection in a rather strange way - through scallops! Several years ago, she bought scallops - way up there in New England, but shipped from Lang Seafood in St. Marys. Knowing she had a Lang line, but very little other information, chanced a call - which ultimately brought hers and husband Charlie's visit to the land of her forefathers. A trek through cemeteries guided by assorted cousins a few months ago, left her with the feeling that she had indeed "come home". She is descended from Camden County patriarch Issac Lang, through Issac, Jr. (and wife Caroline Atkinson), through William and on down to his son Liston.

## JOHN HOUSTON MCINTOSH SUGARHOUSE

State Preservation Officer Liz Lyons announced this summer that the McIntosh ruins have now been named to the National Register of Historic Places, recognizing its significance as an early industrial site.

McIntosh built this tabby structure in the late 1820s as a processing plant for sugar cane grown on his New Canaan Plantation. In the mid 1800s the building burned leaving its walls very much as seen today.

The property is now owned by Camden County and is under the supervision of the Recreation Department.



One of Cumberland's Great Oaks with children at play.  
(Photo from files of National Park Service)

Look at your mailing label. If it carries a red star, according to Guale records your dues for 1992 have NOT been paid. IF you find a red star and you have paid, please get in touch with Society Treasurer Mildred Walko at 882-5294.

If you have not paid, then send your check to her: 800 Margaret Street, St. Marys, GA 31558. Family \$15. Individual \$8. Student \$2.

At the end of August 31 family members have up-to-date dues, and 86 individuals. Those that have joined since the last newsletter in April:

Family - Henry Williams, Jr. ; Terrell Porter; James B. F. Russell; Emmett Williams; James Bruce; Grayson Day; Dave Richmond; Wm. Kelly; Wm. Freeman.

Individuals - Elizabeth Davis, St. Augustine; Andrew Cooley, Brunswick; Mary Louise Nelson, Fernandina; Bonita Spradlin, St. Simons; Dr. Sam Atkinson, Jacksonville; Linda Nyer, Branford, FL; Margaret Farrell, Ocala; Laura Nasworthy, St. George; Ruby Perritt, St. George; Virginia Proctor; Dr. Bill Davis, Atlanta; Maybelle Gilfillen, Monte Vista, CO; Mary McLaughlin, Jacksonville; Lonell Hogan, Jacksonville.

### FROM OTHER AREAS

Borrowed from Laviece Smallwood - this will be of interest to the many with Tippens/Mizell connections - old Camden families. In 1838 John Tippens, his wife Nancy Mizell Tippens and their three children were travelling through Columbia County, the section now south Baker County, heading to Nancy's family, the David Mizells.

Near the home of Elisha Greene they were attacked and all but one six month old daughter, who lived to be ninety years old, were killed. They were buried in the Greene Cemetery in an unmarked grave. In May, family members held a monument dedication ceremony there honoring the Tippens family.

If you are interested in visiting, this cemetery is now known as the South Prong Cemetery and is located on highway 229 about three miles from the Sanderson exit on I-10.

From the St. Augustine Genealogical Society: The second annual conference will be held November 14 focusing on North Carolina research with speaker Jo White Linn, authority on N.C. records. This will begin at 9 AM at Holiday Inn, A1A South, St. Augustine Beach. Registration fee \$20 before Oct. 1, \$25 after Oct. 1. For more information call E. V. McCullough at 904/471-8676 or write the society c/o St. Johns County Public Library, 1960 N. Ponce deLeon Blvd. St. Augustine, 32084.

From friends of the National Archives, East Point: The 3rd Annual Genealogical Festival will be held Saturday, September 26, 8-5 PM, its theme Emigration, Immigration & Migration. For more details write to Friends of the National Archives, P.O. Box 81632, Chamblee, GA 30366.

Coastal Georgia Historical Society with representatives of all lighthouses in Georgia and Florida have joined with the

Historic preservation Department of the Savannah College of Art and Design to create and promote a lighthouse heritage trail.

Plans call for a uniform logo and sign program, trail tour booklet, and brochure promoting the region's maritime history. This combined effort will add to the public's awareness of these magnificent structures, and aid in their preservation.

### COLUMBUS AND THE LAND OF AYLLON, A Seminar on Early American History

The Georgia Historical Society, the Lower Altamaha Historical Society and other societies are sponsoring this seminar in Darien September 25-27 featuring twelve distinguished scholars in the fields of history, archaeology, religion, geography.

By the time you get this newsletter, the deadline will have passed to register for the box lunch and other sessions, but Saturday's events are still open. Saturday's meeting will be at the McIntosh County Courthouse, corner of US 99 and US 17 in Darien. There is no charge for the seminar.

If you want to attend, call Mrs. Berkeley Minor at 912/832-5736. Eloise Baily will be driving from down here, if you want to carpool, call her at 882-4587.

**A QUERY** - Research shows that Camden County has sent only two Congressmen to the nation's capital to date - John Floyd and Duncan Clinch. Does anyone have further information?

Society member and noted writer Mary R. Bullard is featured in the Spring 1992 issue of the Georgia Historical Society quarterly. You will be interested in reading her extensively researched Dungeness article.