



# Guale News

SEPTEMBER 1996

VOLUME 15, NO. 4

## RODNEY SHEFFIELD TO SPEAK AT SEPTEMBER MEETING REMNANTS OF EARLY CAMDEN COUNTY BAPTIST CHURCHES

Tuesday, September 10, 7:00

Camden County Library on

Highway 40 and Cross Road in Kingsland.

You will especially want to hear this. Rodney is well qualified to speak on any local historical subject. He is quite a student of history, a family genealogist and collector of historical memorabilia.

You will be hearing about, not just buildings and church activities, but about the people who made up these early churches: Hebron, which was located at Moire Plantation west of Kingsland, Ruhamah and the Kingsland Baptist Church. The Reverend Gideon Mallette, Methodist minister turned Baptist, was one of the founders of Hebron and Ruhamah and will figure prominently in this presentation.

When Kingsland was established, then a "town" church was needed and W.H. Peeples and others became involved in building one west of the depot and near Mr. Peeples' store. So the Peeples family (ancestors of Rodney) will be presented also.

Old pictures and deeds will enliven Rodney's presentation. We will look forward to seeing you.

Executive session is at 6:30.

## IMPORTANT ANNOUNCEMENT

Guale News will be mailed first class from now on. If you wish to continue receiving this, you must bring your dues up to date. After this issue only those who are qualified members will receive it. If you have a red mark on your label, send your dues in ASAP, if you wish to stay on the mailing list. Some historical societies, columnists and others who have given Guale Historical Society invaluable aid, will continue to receive the newsletter. If you have a red mark and believe that you are up-to-date, please call either treasurer Mildred Walko 882-5294 or newsletter editor Eloise Thompson 882-4587.

Members joining since May: Family memberships, W.H. Euchanan; Charlie Davison, Greenwich, CT; Vernon Johnson; William Kirk, West River, MD (new); G.L. Loggins, Jacksonville; Amelia Island Historical Society (new); Alan Bailey, Savannah (new); Herbert Rowland

Individual memberships: Agnes McArthur (96 & 97); Catherine MacDonell

The year runs from January through December, but some of you have let 1996 slip past without updating. Send to Mildred Walko, 800 Margaret St. St. Marys, GA 31558. Student \$2 Individual \$8 Family \$15.

## NEWS FROM BRYAN-LANG HISTORICAL LIBRARY

Dr. John Christian, Bryan-Lang Librarian and Guale Historical Society President reports: Two part-time library employees

of the library Winnie Wainright and Katie Cooler have compiled indexes of Camden County censuses 1820-1920 (there is no 1890 census). Copies can be purchased from the library. \$5 to \$20 depending on size of census. Tax Digests have been indexed for 1889, 1890 and 1891 as replacement for the missing 1890 census. This publication is \$5.

They are also indexing many of the old county records that are in the library. Among those completed are the Commissioner's Minutes, Estate Accounts, and the Bride Index to complement the Groom Index. The book SETTLERS OF UPPER GEORGIA has been indexed, too.

Lataya Narcisse, a student and part-time employee, is doing much of the typing. She also has put some of the records into the computer.

Those of you with Braddock connections will be happy to learn that Bryan-Lang has received a copy of a new book WOODEN SHIPS AND IRON MEN FOUR MASTER MARINERS OF THE COLONIAL SOUTH. This is the story of David Cutler Braddock, his father-in-law William Lyford, Sr. and his son John Braddock. All Braddocks and related families of the southeast are probably descendants of these men. It is a 304 page, fully indexed, hard cover book devoted solely to the exploits of these three men and David's brother in law William Lyford, Jr. This book was published this year (1996).

## CEMETERY REPORT

The tipped over marker in the Davis-Hardee lot has now been set back in place and all is well. A falling limb had knocked it over, but fortunately did not break it. Bailey Monument Company of Waycross handled the work. Cemetery Chairman Stanley Walko has been caring for this lot and the Bachlott-Hawkins lot. They are looking good.

## GENEALOGY CORNER-GIDEON MALLETTE

This information is taken from GEORGIA SALZBURGERS AND ALLIED FAMILIES, PIONEERS OF WIREGRASS GEORGIA volumes 4 and 8, CAMDEN'S CHALLENGE, and Camden County census records.

The Mallette family is widespread and has an international organization that has met in many places including Switzerland. The Georgia branch of the Mallettes begin with a Gideon, who lived near Purysburg, South Carolina and died about 1771. He and his wife Mary Lombard had at least three children, among them Daniel, who married Mary Brunson and died in 1775.

Among their children was Gideon II, Revolutionary Soldier, of Effingham County. He married Hannah Rosche. Abraham, one of their nine children, married Catherine Kennedy. They were the parents of Gideon Mallette who came to Camden County.

The Reverend Gideon Asbury Mallette was born in Effingham County June 26, 1817. This teacher and preacher graduated from the University of Georgia in 1841.

He was admitted to the Methodist Conference in 1843 and served churches in Hinesville, Brunswick, Tallahassee, Monticello, Fletcher Institute in Thomasville, and St. Marys (1847). After he

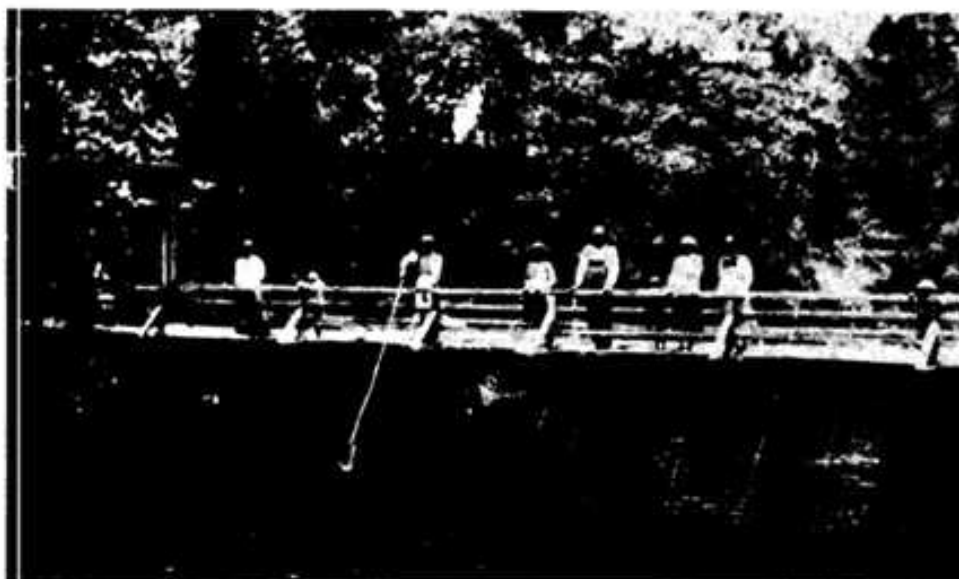
settled in Camden County, he established Moire Plantation on the St. Marys River west of present-day Kingsland. About this time he left the Methodist church and became a founder and pastor of Hebron and then Ruhamah Baptist churches.

He married first on January 1, 1852, Sarah Brown Chevalier, the daughter of David Brown and the widow of Francis Chevalier. She was born in 1821, died in 1852 and is buried at Homeward.

Their children were Catherine Elizabeth (1849-1869) and David Brown (1852-1869). They are buried at Homeward.

The 1850 Camden County census lists him as a Methodist minister with his wife Sarah, daughter C.E. age 7 months, and stepdaughter Frances Chevalier, age 5 in the home. (She died the next year and is buried in Homeward.)

The Reverend Mallette married second, Susan Lang, born March 30, 1829



KINGSLAND BAPTIST SUNDAY SCHOOL CRABBING ON BRIDGE ON SHEFFIED ISLAND - Maxine Wells

and died August 11, 1864. She was the daughter of Isaac Lang, Jr. and is buried at Homeward.

The 1860 census shows him still a Methodist minister. His wife Susan and five children are in the home.

Their children were Isaac Lang (1854 - 1906), Amanda (1856-1894, married William C. Davis ), Ann Felder (1858 -1939, married Julian Proctor), Mary (1860-1893), Caroline (1862-1863), Francis (1864-1877, killed by lightning), Angelina (born 1864, twin to Francis, married Isaac Flood)

Gideon Mallette married third December 8, 1867, Georgia Jane Sheffield, the daughter of John Sheffield. She was born May 6, 1833 and died March 22, 1923.

He is not shown in the 1870 Camden County Census. In 1880, his wife Georgia and children Isaac, Annie, Mary, Angeline, Sarah, and Alice are in the home with him.

Their children were Sarah Sheffield ( 1871-1931), married Craddy O. Floyd. Alice Mordina (1873-1964) married Francis M. Hodge.

The Reverend Gideon Mallette died February 20, 1891. He is buried beside his wife Georgia Jane and his son Isaac at Zion Cemetery. IN MEMORIAM Mrs. William Bailey (Louse)

### LETTER FROM READER/MEMBER

Dr. Bill Davis, a descendant of Camden County families and Atlanta resident writes:

Editor Guale News:

Although I'm three generations removed from Camden County, the Guale News is a read-me-first item when it comes in. On the front of the April 1995 issue, I recognized my great grandfather's house as soon as I saw the picture.

Your genealogy column brings more information (and more questions) about families I know or know about. The Pacetti and Bedell families, just this year, for instance.

I have literally thousands of Camden-related names and dates in my genealogy database that I would be glad to share with anyone else researching the same lines. Basically, it's anyone related by blood or marriage to Daniel Robert Proctor (3 Jan. 1830-14 Feb. 1906), or had any connection to his family. I would like to correspond with anyone studying these families.

Sincerely,

Bill Davis 465 Riverhill Drive,  
NW Atlanta, GA 30328-3718 Ph. 404-256-2334.

(Ed.'s note, Thanks for those kind words, cuz)

Another note of interest from active charter member Dot Holstun, now living in Decatur, says that Dot is now back in her apartment after five weeks in the rehab unit of Wesley Woods Geriatric Hospital where she was treated for a hip displacement. She is now fine, but you might want to drop her a note: 2806 N. Decatur Rd. Apt. 226, Decatur, GA 30033-5931.

**ALERT** - you remember from an earlier newsletter, that quite a struggle went on to hold onto the historical Colerain Road name, after Kingsland changed a portion of it to Laurel Island Parkway. It turned out that the City of Kingsland did not officially own the road and the county intervened. Now Kingsland is attempting to secure the road. So stay alert for another name change attempt ironically, this is all happening in the bicentennial year of the Coleraine Treaty signing. (See May Guale News)

### BOOKS

### BOOKS

### BOOKS

Hot off the press JOURNAL OF A VISIT TO THE GEORGIA ISLANDS of St. Catherines, Ossabaw, Sapelo, St. Simons, Jekyll and Cumberland edited by Guale Historical Society member

Mary Bullard and Virginia Steele Wood This record of a 1753 journey down the coast of Georgia was jointly published by the Georgia Historical Society and Mercer University Press. The foreword by Dr. Louis De Vorsey sets the stage for this detailed book. Editors Bullard and Wood have done an excellent job on their map and illustration selection. Any history buff will especially find the end notes invaluable. If your bookstore doesn't have it in stock, they may order from Mercer University Press, \$22.95 hardcover.

**QUARTERMAN FAMILY OF LIBERTY COUNTY, GEORGIA AND RELATIVES**, has just been printed after 75 years (that's not a misprint) of preparation. Order from Quarterman Book, c/o MIDS, 1106 Clayton Lane Suite 500W, Austin, TX 78723. If your family was from Liberty County, McIntosh or Long or was associated with Midway Church, you could have been a relative and may find ancestors in this book. It includes photographs, genealogical charts, index and an extensive bibliography. \$40 plus \$5 shipping.

### FROM CUMBERLAND ISLAND

An exciting tidbit in the June issue of the Cumberland Island Museum Newsletter tells of a find in the Greene-Miller Cemetery, a large brick vault with an arched top in the northeast corner of the walled area. It is large enough to have held more than one body. The National Park Service would like any information on who might be buried there. Could it be the long lost Phineas Miller, Caty Greene's second husband? ( Comment -There is no clue to date on his burial site. He died on the island.)

### GEORGIA HISTORICAL SOCIETY

The last session of the Georgia General Assembly passed resolutions in both houses recognizing the Georgia Historical Society for its Initiative 2000. The Society was commended particularly for its Affiliate Chapter Program, which reaches throughout the state helping small societies to collect, preserve and share their local history.

The current issue of the Georgia Historical Quarterly has a new feature: Archival Acquisitions and Openings. Family researchers in the Savannah area might find these of interest. First Baptist Church of Savannah Records 1805-1975. Church minutes, Sunday School records, general church records, member lists and information on marriages, baptisms, and deaths are included in this collection.

Those with Scottish ancestry in Savannah might find this collection useful. St. Andrew's Society of Savannah Records 1762 - 1995.

Research hours at the Georgia Historical Society Library are Tuesday- Friday 10-5 and Saturday 9-3. Ph. 912/651-2125.

Now that Guale Historical Society has become an affiliate chapter of the Georgia Historical Society, it receives its quarterly. This are on file in the Bryan-Lang Historical Library for all members use.

### HELP???

St. Marys United Methodist Church is approaching its bicentennial year, in 1999. If any of you readers have pictures of buildings, activities or church members or any documents of interest about the church, please let Eloise Thompson know. They will be copied and returned to you. 912-882-4587.

### REMINDERS

Meeting, September 10, 7:00, Rodney Sheffield speaker. Camden County Library.

Get your 1996 memberships in today if you want to continue receiving the newsletter !!



GAULE NEWS  
GAULE HISTORICAL SOCIETY  
P. O. BOX 398  
ST. MARYS, GEORGIA 31558

ADDRESS CORRECTION REQUESTED